

MICHEAL A. KOTT

(630) 338-2050
328 Alabama Trail
Carol Stream, IL 60188
michealkott@aol.com

Height: 6'
Weight: 165
Hair: Brown
Eyes: Hazel

THEATRE (Representative Roles)

Over The River And Through The Woods (Jedlicka Performing Arts Center, Cicero, IL) . . . Frank
Peter Pan (Jedlicka Performing Arts Center, Cicero, IL) Captain Hook
One Flew Over the Cuckoo's Nest (Albright Theatre, Batavia, IL) Dale Harding
Defying Gravity (Cenacle Theatre, Chicago IL) Claude Monet
Fortinbras (Cenacle Theatre Chicago IL) Horatio
Neville's Island (Cenacle Theatre, Chicago IL) Neville
Tommy (Jedlicka Performing Arts Center, Cicero, IL) Uncle Ernie
Blood Brothers (Jedlicka Performing Arts Center, Cicero, IL) Sammy
(Best Supporting Actor in a Musical – Geni - Jedlicka Performing Arts Center)
Seascape (Sweetooth Comedy Theatre, San Diego CA) Leslie
HMS Pinafore (Freighthouse Dinner Theatre, Tacoma WA) Sir Joseph Porter
Man With A Load Of Mischief (Freighthouse Dinner Theatre, Tacoma WA) . . Lord
1776 (Freighthouse Dinner Theatre, Tacoma WA) Courier
Annie (Center Stage, Mainz West Germany) Rooster
Sly Fox (Center Stage, Mainz West Germany) Simon Able
Modigliani (Center Stage, Mainz West Germany) Modigliani
(Best Actor in a Lead Role –European Play Festival)

FILM & TELEVISION

Five Military Training Films Cobro Productions
(Seattle, WA)
Frontline Bensenville (1/2 hour interview, 3 episodes) Cable TV
(Bensenville, IL)

VOICE

A Kiss On The Lips (Books on Tape) Sound Productions
(Lombard, IL)

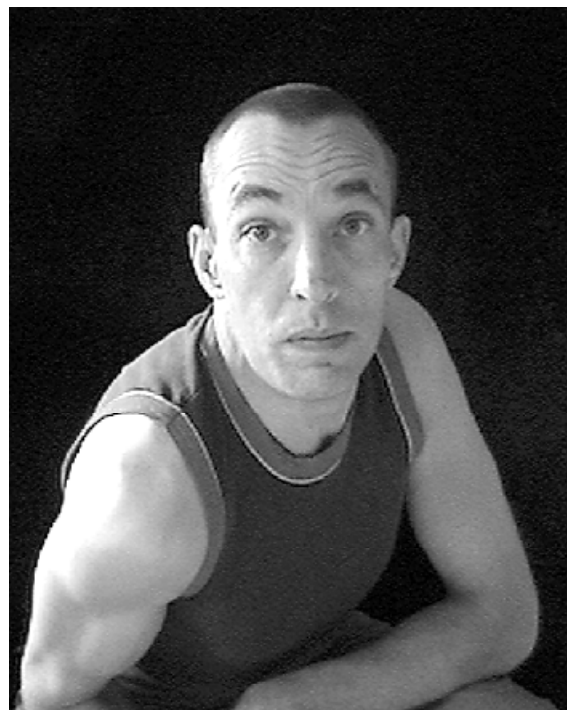
TRAINING

Acting: University Of Arkansas, Fayetteville, AR
University of California, Riverside, CA
Vocal: Doug Susu-Mago, Evanston, IL



Micheal A. Kott

630-338-2050



This document was created with Win2PDF available at <http://www.daneprairie.com>.
The unregistered version of Win2PDF is for evaluation or non-commercial use only.